



Easy Scrub Express Flat Mop System

Technical Data

March 2007 Version 1

Description:

3M™ Easy Scrub Express Flat Mop System is an addition to a unique set of cleaning tools designed to make floor cleaning and disinfecting faster, easier and safer. The system features a lightweight handle with liquid-on-demand dispensing. The interchangeable bottles allow for quick change between different cleaning products.

Special Features:

Easy Scrub Express Flat Mop Tool – Patent Pending

- Solution filled bottle dispenses liquid as needed.
- Bottles of different cleaners can be quickly changed for a variety of cleaning tasks.
- The tool has a variable height adjustment.
- The bottle diameter is designed as an ergonomically friendly "power grip" size.
- Lightweight anodized tool is durable & corrosion resistant.
- Swivel head for easy maneuvering & effective baseboard cleaning.
- Mop holder size provided with tool is 16". Accessory head sizes are available in 10" and 22" lengths.
- Solid vinyl grips are easy to clean & disinfect.
- The bottle is slightly opaque and the liquid is visible through the bottle.
- Closed system helps prevent contamination of solution.

Packaging:

Express Flat Mop Tool – 1/box
Bottle caddy – 6/case
Bottles – 12/bag, 6 bags/case
Mops – 10/bag, 4 bags/case
Pour Jug – ½ gal: 6/case
Pour Jug – 1 gal: 4/case

General Use Directions:

Preparation

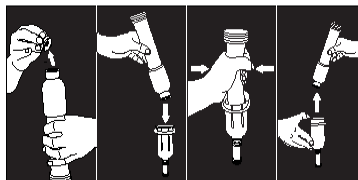
1. To attach mop holder to handle:
 - Depress the spring-loaded metal buttons on the mop holder.

- Slip the bottom end of the Express tool over the top portion of the mop holder.
 - Loosen the black nut and adjust handle to desired height. Re-tighten the black nut to maintain height.
 - Insert the small neck end of the bottle holder into the top end of the handle until it snaps into place.
2. Load cart with the Express Flat Mop Tool, several clean, dry Easy Scrub Flat Mops and filled bottle caddy.
 3. Proceed to the first patient room or job site.

Note: The tool is safe for use with general cleaners or disinfectant cleaner with a pH in the range of 7 to 10.

Filling the bottle and attaching to Tool Handle

1. Fill the Easy Scrub Pour Jug, with the appropriate cleaner or disinfectant, using the 3M™ Twist 'n Fill™ Dispenser.
2. Fill Easy Scrub Express bottles using the Pour Jug.
3. Replace cap and cover on the Easy Scrub Express bottles.
4. Place the filled bottle in the bottle caddy.
5. Place filled caddy on cart.
6. To insert bottle into the top of the Express Tool, **remove cover from cap** and slide bottle into holder, cap side down, until it snaps into place.



9. To remove bottle from tool, pull latch away from bottle as you pull the bottle up and out of holder.

Note: For safety of personnel, do not use filled tool to clean vertical surfaces like walls and ceilings.

Ready to Clean

1. Place a clean Easy Scrub Flat Mop face down on the floor.
2. Position the mop holder over the mop & push the holder down to attach mop.
3. Squeeze the bottle until a small puddle of solution has been dispensed.
4. The solution will dispense out of the clear hose at the base of the handle.
5. Hold the bottle, as part of the tool, with the top hand. Squeeze bottle when more chemical is needed.
6. Push the flat mop through the solution on the floor to thoroughly moisten the mop.
7. Clean the floor using a figure-eight, S-stroke or whatever method is comfortable for the user.
8. Apply additional liquid as needed.

Note: When disinfecting, dispense enough liquid to comply with the manufacturer's recommended dwell time.

Clean-up

1. Remove dirty mop from holder & bag for laundering.
2. Load a clean mop and refill/change bottle if necessary.
3. Change mop after each room or follow the policy used in your facility.
4. At the end of the shift, remove the bottle from the tool, flush out tool by running water through it.
5. Wipe the outside of the handle with disinfectant.
6. Allow to dry.

Product Specifications:

Handle: Adjustable 38" – 59 1/2"

Mop holder: 4 1/4" x 16"

Easy Scrub Flat Mop Tool:

empty – 31 oz

filled – 44 oz

Precautionary Summary:

According to FIFRA, this applicator does not require EPA registration

3M Branch Sales Offices

ANCHORAGE

11151 Calaska Circle
Anchorage, AK 99515
Telephone: 907/522-5200
Facsimile: 907/522-1645

HONOLULU

4443 Malaai Street
Honolulu, HI 96818
Mail to: P.O. Box 30048
Honolulu, HI 96820
Telephone: 808/422-2721
Facsimile: 808/422-9557

CONTINENTAL UNITED STATES

Customer Service Department
3M Center Building 223-5S-07
St. Paul, MN 55144-1000
Order Entry: 800/852-9722
Facsimile: 800/447-0408

CANADA

1840 Oxford Street East
London, Ontario, Canada
N5V 3G2
Mail to: P.O. Box 5757
London, Ontario, Canada
N6A 4T1
Telephone: 800/364-3577
Facsimile: 800/479-4453

Important:

The information provided in this report is believed to be reliable; however, due to the wide variety of intervening factors, 3M does not warrant that the results will necessarily be obtained. All details concerning product specifications and terms of sale are available from 3M.



Building and Commercial Services Division

St. Paul, MN 55144-1000
1-800-852-9722
www.3M.com/commcare

3M and Twist n' Fill are trademarks of 3M Company.

Copyright © 2007, 3M IPC. All rights reserved.